

Agency Preparedness for COVID-19 Pandemic

April 10, 2020

Surveillance

- Set up daily to twice daily surveillance screening for all employees
- Set up daily surveillance screening for patients scheduled to be seen prior to visit being made
 - If patient screening is negative use standard precautions
- Schedule daily leadership huddles in the morning and towards the end of the day to address COVID-19 issues
- Evaluate effectiveness of organizational infection surveillance frequently and update as necessary

Staffing

- Identify Staff member(s) willing, able, capable to care for PUI*, SPUI** and COVID-19 positive patients – your COVID-19 Team
 - Identify geographical region and case load capacity
 - Determine supply of proper PPE available
 - Determine if additional supply is available
 - Ensure training and competency evaluation in use of PPE, organization's infection plan and COVID-19 policies/procedures
 - Determine/monitor number of PUI, SPUI and COVID-19 positive patients your care center can manage
 - Follow the COVID-19 Decision Tree for patients who are PUI, SPUI or COVID-19 positive
 - Update emergency preparedness plan or supplement to the plan daily/weekly as necessary – changes based on Local, State and Federal Authorities
 - Ensure staff have training and access to tools and resources related to management of seriously ill and terminal patients during a pandemic.
- Identify staff member(s) that are not recommended for COVID-19 patient care
 - Individuals at risk – recommended these categories not be front-line PUI and COVID-19 care providers
 - Individuals 65 and older
 - Diagnosed with chronic lung conditions, including moderate to severe asthma
 - Diagnosed with heart disease
 - Immunocompromised
 - Undergoing cancer treatment
 - Severe obesity with BMI > 40
 - Chronic uncontrolled medical conditions
 - Pregnant
 - Work with organization's human resource team to monitor high risk staff closely
 - Determine visit schedule based on non-PUI, SPUI and COVID-19 patient needs
 - Utilize for non-patient facing activities as needed

COVID-19 Decision Tree (See Algorithm)

COVID-19 Team

Is patient a PUI, SPUI, or confirmed COVID-19 positive patient?

■ YES

- *Is COVID-19 team available?*

○ YES (COVID Team Available)

- Determine who is available
 - ◆ Based on patient needs
 - ◆ Based on geography
- Is the correct PPE available?

○ YES

- Provide care as ordered

○ NO

- Can the correct PPE be obtained?
 - ◆ Health Department
 - ◆ Sister agency
 - ◆ Other community source

○ NO (COVID Team Not Available)

- Can care safely be delayed?

○ YES

- Notify MD/Provider and provide telephonic care until in person care can be delivered

○ NO

- Notify MD/Provider and or referral source

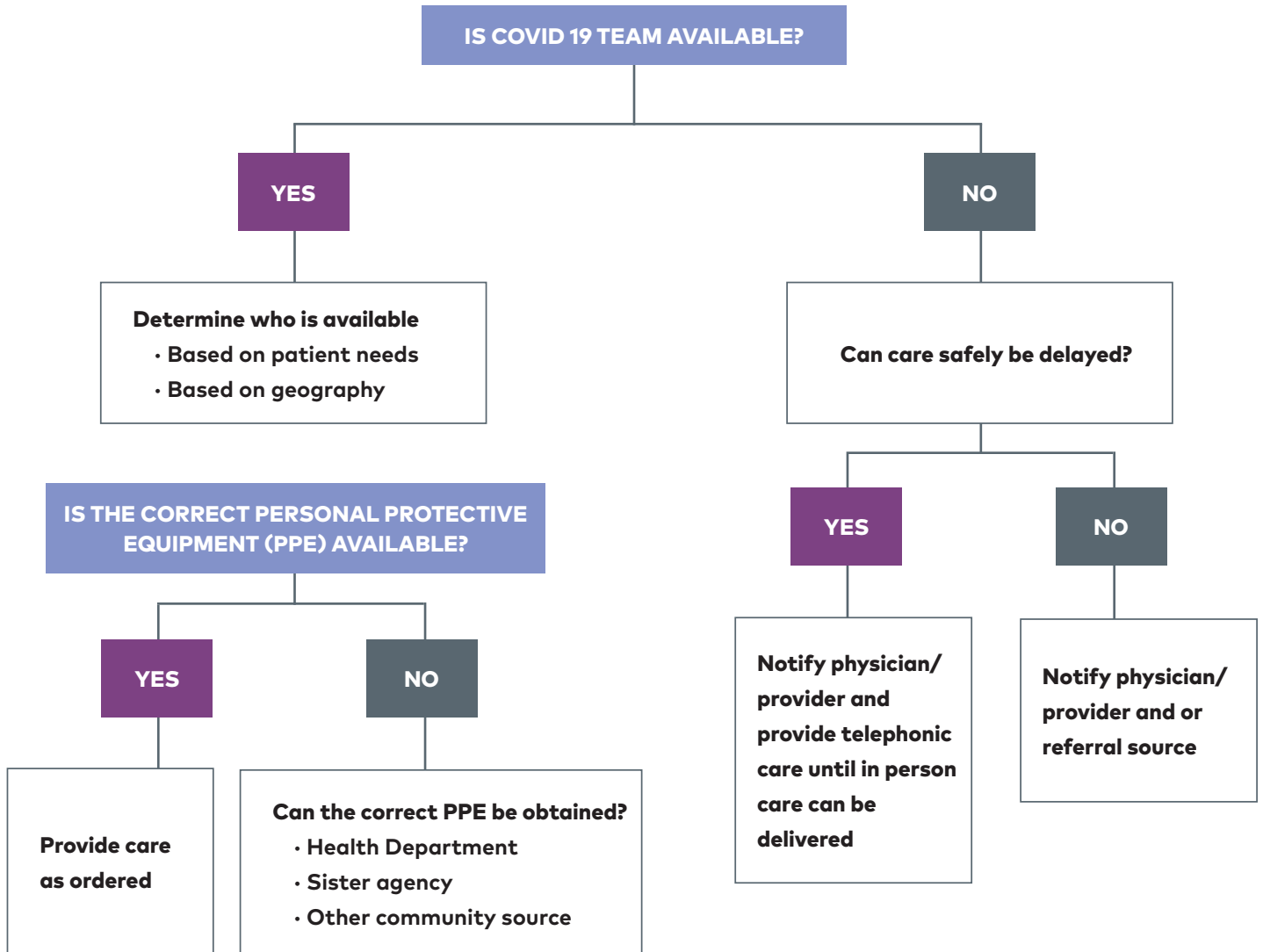
***PUI** – person under investigation; this includes someone with symptoms that may or may not be related to COVID-19

****SPUI** – suspected person under investigation; this includes when someone has been directed to be tested and we are waiting for confirmation.

NOTE: Individuals may transition from PUI to SPUI to learning they were not COVID-19 positive.

COVID 19 Team Decision Tree

This is a tool to assist providers in decision making for patients who are PUI*, SPUI**, or confirmed COVID 19 positive



*PUI – person under investigation; this includes someone with symptoms that may or may not be related to COVID-19

**SPUI – suspected person under investigation; this includes when someone has been directed to be tested and we are waiting for confirmation.

NOTE: Individuals may transition from PUI to SPUI to learning they were not COVID-19 positive.